

# venue

## The Old Vic Tunnels



### about the venue

### THE OLD VIC TUNNELS

the richly atmospheric 1840s railway station tunnels form a cavernous labyrinth of arches, tunnels and capacious floorspaces underneath waterloo station. the old vic tunnels present a wide variety of potential uses: events, filming (non-sync sound advised), shows/exhibitions and outstanding potential for editorial stills. the tunnels were brought back into use by the old vic theatre's artistic director kevin spacey as an additional and evocative performance space for the old vic theatre's new writing programme. the venue has since played host to critically acclaimed and often site-specific new theatre, installations, exhibitions and a variety of arts events with notable artists such as banksy showing work there. other uses include live performance, advertising and commercial shoots, music videos, shows and installations by artists and even private dinners. the "bunker bar" offers an eclectic, spacious bar area.

the old vic tunnels unlock the visual drama of hidden london with inspirational industrial backdrops for imagery and an atmosphere visitors will remember.

see more images at [www.industri.uk.com/old-vic-tunnels](http://www.industri.uk.com/old-vic-tunnels) (click to visit).



click image to visit the web gallery



- space: 2 underground levels, please enquire
- capacity: 500
- location: london, se1

represented by:  
industri management  
tel: 020 7269 7935  
email: [info@industri.uk.com](mailto:info@industri.uk.com)  
Holborn Hall, 2nd Floor,  
193-197 High Holborn, London SW8 5BN



**size:** underground, 2 x levels (enquire for full dimensions)  
**capacity:** 500 (to include all staffing/personnel)

**power/utilities:** 3phase

**other utilities:**  
mains water supply available

**hospitality:**  
fully-equipped bar

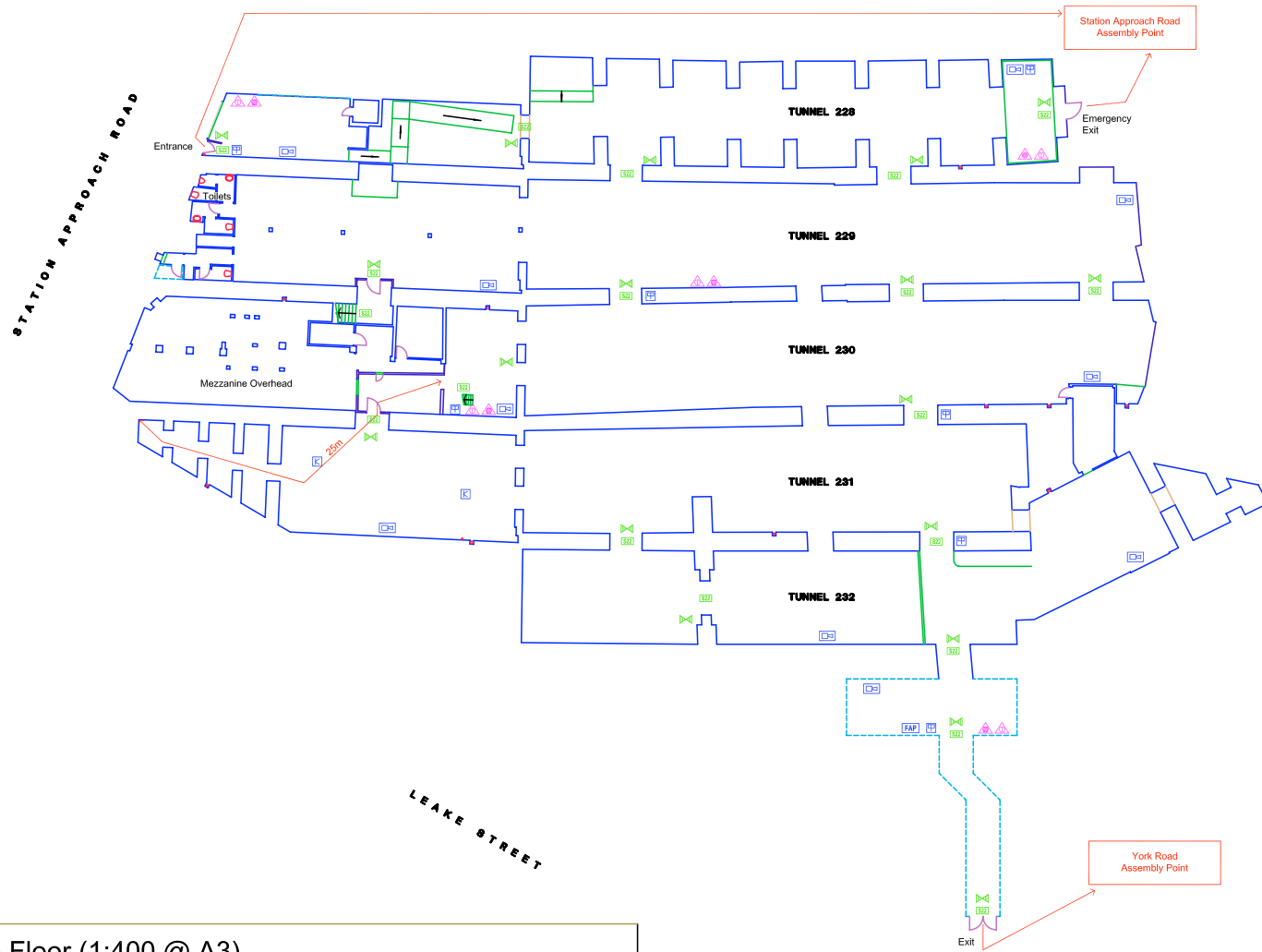
**lighting:**  
electric practical and accent lighting

**WCS:**  
limited wc facilities

**access:**  
public entrance at street level  
rear/loading access can be arranged via  
leake street

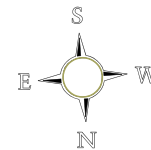
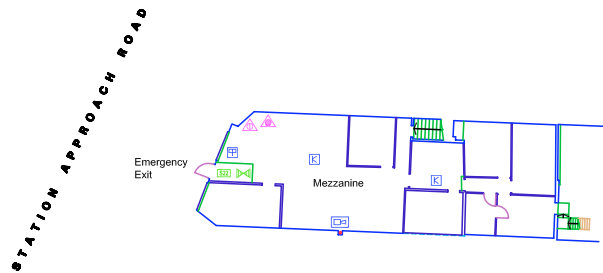
please contact our team for further details.

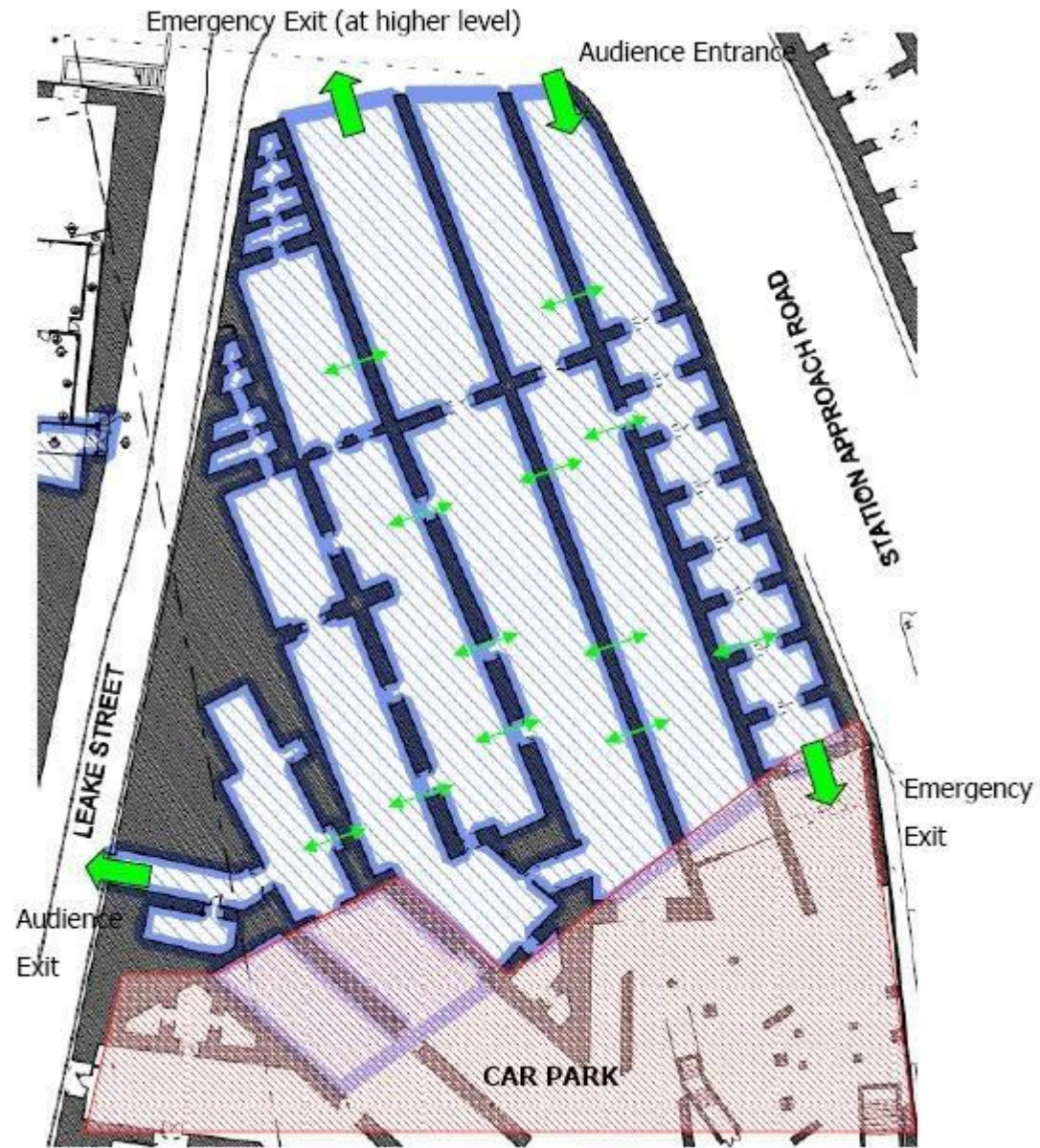




- Legend:**
- Water Fire Extinguisher
  - Foam Fire Extinguisher
  - Emergency Lighting
  - Fire Exit Sign
  - Heat Detector
  - Manual Call Point
  - Fire Alarm Point
  - Sunder Bell
  - Travel Distance

Mezzanine Floor (1:400 @ A3)







### how to get there

by underground/overground rail:  
nearest station waterloo  
(northern/bakerloo/jubilee lines and br)

### contact

industri management  
020 7269 7935/020 7269 7936  
info@industri.uk.com

industri management exclusively manages some of london's most exciting events, filming & photographic locations.

we executive manage all location hires and do all the relevant paperwork such as invoicing, fee negotiations, health & safety assessments and insurance.

