

skylounge



photography Rob Falconer



270° of london from the 33rd floor



skylounge

a stunning addition to industri management's roster of london's premier event locations, the breathtaking sky lounge commands cinematic skyline views from the top one of the city of london's highest towers. starting from tower bridge and city hall, a dazzling sweep panorama unfolds through st pauls and the centre, past the new olympic stadium and right back around to canary wharf in the east.

the 305-foot high tower opened in 2010, its crisp and cleanly styled interior designed by wallpaper and monocle editor tyler brule. the tower's crowning glory is the sky lounge, offering triple-height and triple-aspect panoramic windows designed to dazzle guests with views of the capital afforded by only a very few venues available for public hire in london. by night or by day, the capital's glorious overview is ever changing and a constant spectacle for guests.

via a private dedicated lift guests are whisked straight to up floors 32 and 33, the location of the sky lounge and its ancillary spaces. ancillary rooms are available to service event use, as is a further viewing and seating reception space on exit from the lift.

the tower's 33-rd floor gym and 32nd-floor boardroom, both offering spectacular views, are also available for hire. further spaces available in the tower via industri include a ground-floor meeting room and courtyard.

the sky lounge and additional areas within the tower represented by industri also offer exceptional potential for filming and stills location use. please do contact us with your potential requirements or to arrange a site visit and see this extraordinary new london venue through your own eyes.

location: broadgate, london e1

transport links: liverpool street (5-min walk tube/rail)

capacity: main event space 150, additional areas also available. contact us with your requirements.





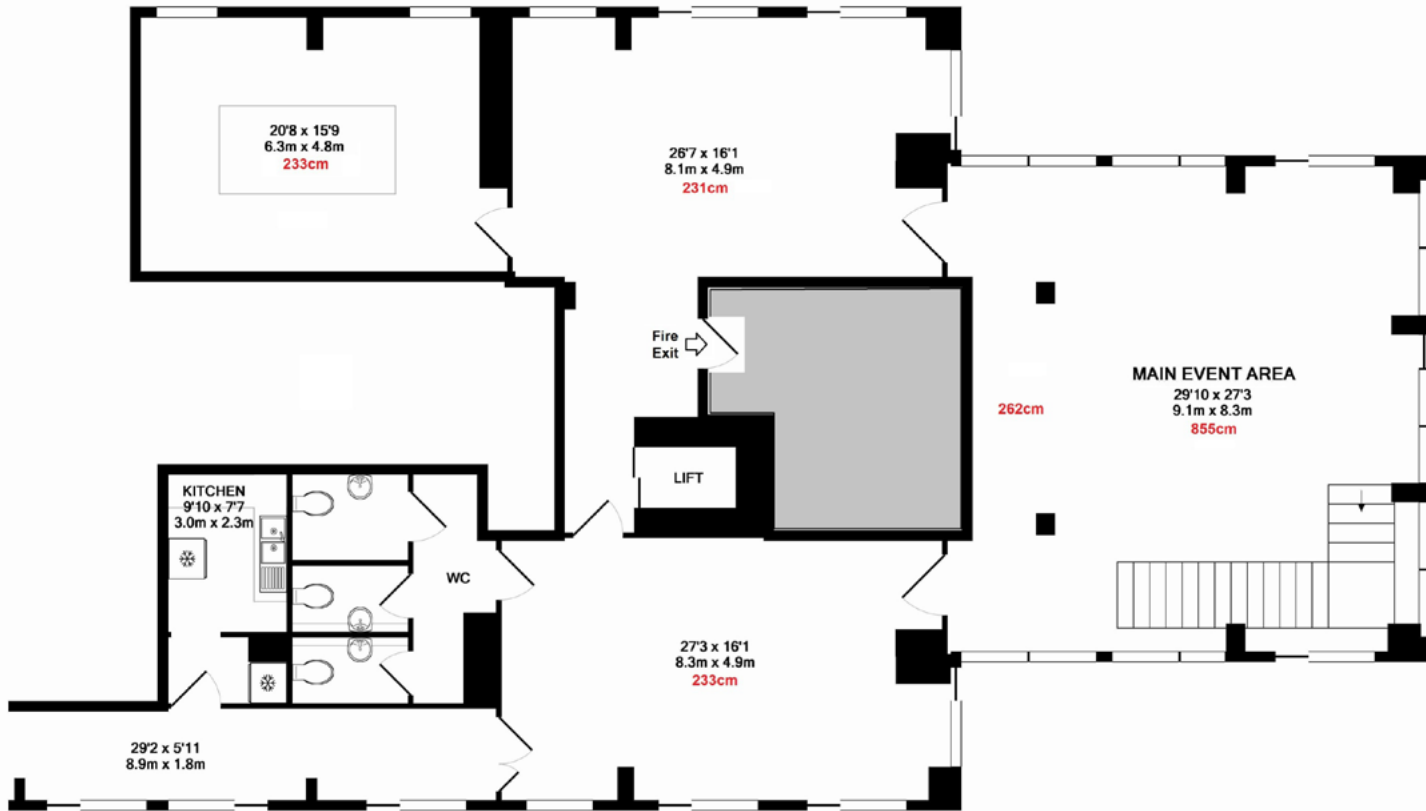
skylounge www.industri.uk.com/sky-lounge



Industri Management,
Holborn Hall 2nd floor
193-197 High Holborn
London WC1V 7BD
Tel: 020 7269 7935

Jessica Leyton
Event Manager
07920 553 749
jess@industri.uk.com





HEIGHT Approx .CM.

32ND FLOOR
APPROX. FLOOR
AREA 2510 SQ.FT.
(233.2 SQ.M.)

TOTAL APPROX. FLOOR AREA 2767 SQ.FT. (257.1 SQ.M.)

Whilst every attempt has been made to ensure the accuracy of the floor plan contained here, measurements of doors, windows, rooms and any other items are approximate and no responsibility is taken for any error, omission, or mis-statement. This plan is for illustrative purposes only and should be used as such by any prospective purchaser. The services, systems and appliances shown have not been tested and no guarantee as to their operability or efficiency can be given.
Made with Metropix 02011

