

the tramshed london ec2

booking information for hirers



bbc tv eastenders 25th anniversary exhibition, the tramshed, ec2

industri
industri locations

industri management
holborn hall 2nd floor
193-197 high holborn
london WC1V 7BD

tel: 020 7269 7935
www.industri.uk.com
email: info@industri.uk.com

exclusively
represented by

filming events photography
INDUSTRI
MANAGEMENT



bbc eastenders 25th anniversary exhibition,
the tramshed, 2010 (photo: monika manieri/bbc)

The Tramshed is ideally located in the heart of the Shoreditch Triangle, London's hot spot for creativity and nightlife. The Tramshed was originally an electricity generating station for the Shoreditch Tram system. The building spans three floors. The main hall is complimented by beautiful architecture dating back to 1905. The building's interesting features, grand entrance and high ceiling create the perfect setting for fashionable soirées, product launches and art events. Perfectly positioned to host a plethora of events with public transport within easy walking distance. With other event spaces such as the prolific Shoreditch House and Beach Blanket Babylon having been recently established, the canvas for opportunities has been set.

size: entire floor space 11,000 sqft/1,022sqm, 3 x floors
ground floor, main hall 3,358sqft/312sqm
basement hall 2,798sqft/260sqm
first floor, space 4,826sqft/76.8sqm
ceiling height: 25 ft/9m main hall 12 ft/3.6m basement hall

capacity: 400 standing 250 sit down

power/utilities: 3phase

other utilities:

Mains water supply available.

lighting:

The venue boasts modern lighting and main hall has great natural light.

access:

3 entrances, 1 entrance with easy access for large vehicles / trucks

access:

3 entrances, 1 entrance with easy access for large vehicles / trucks

parking:

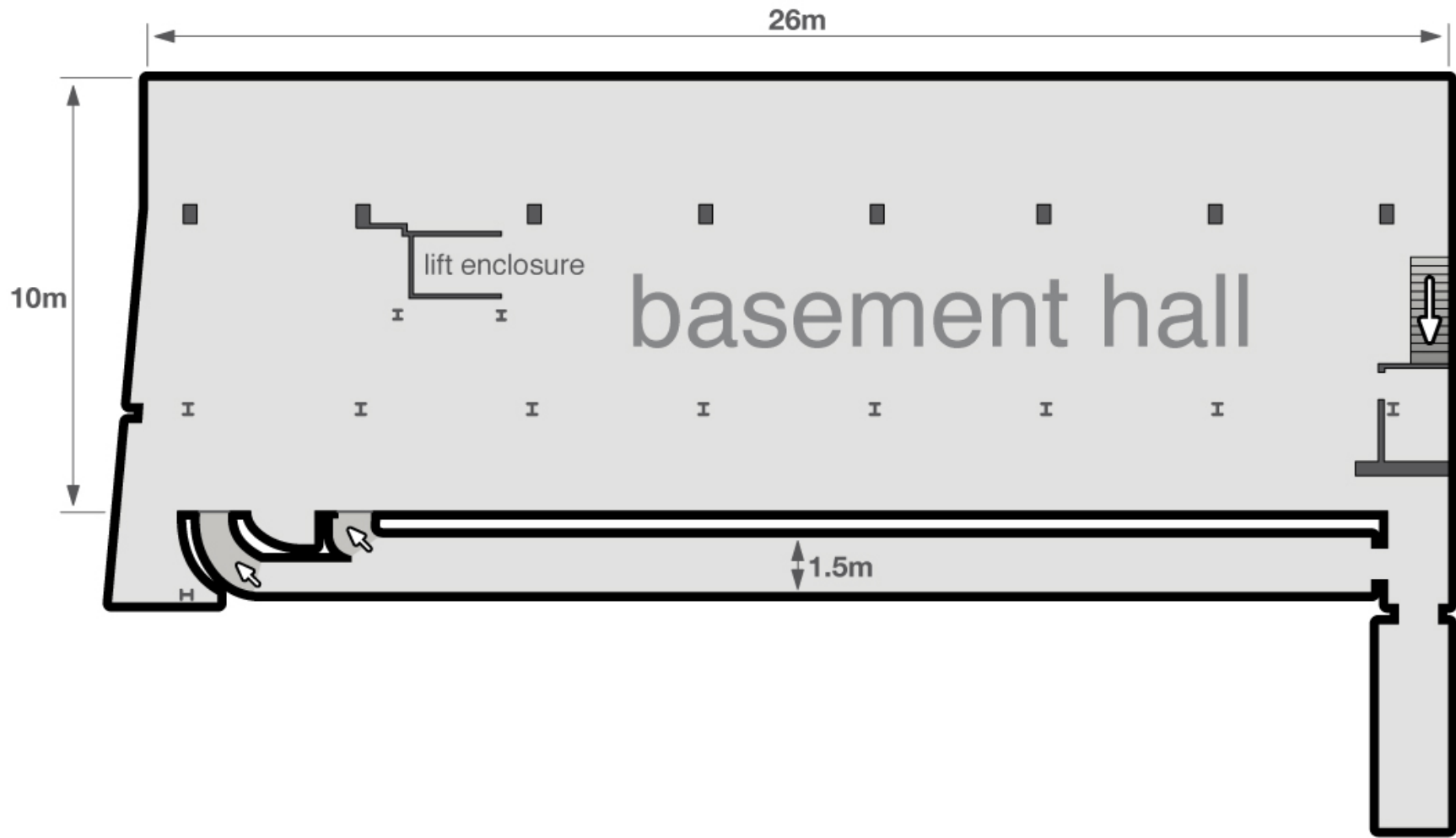
Metered street parking, NCP nearby.

WCS:

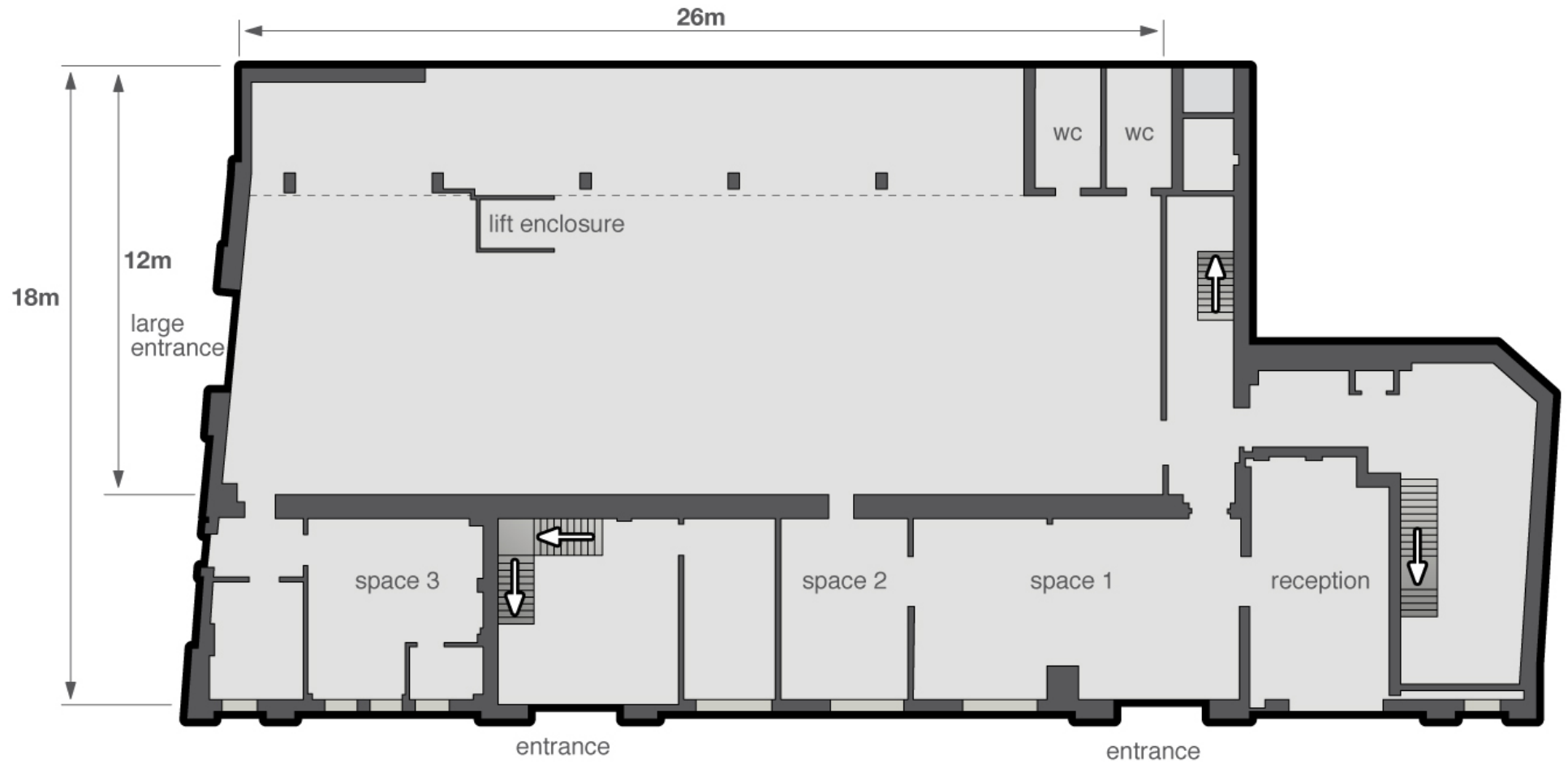
2 x female 2 x male



Please contact our events team for further details.



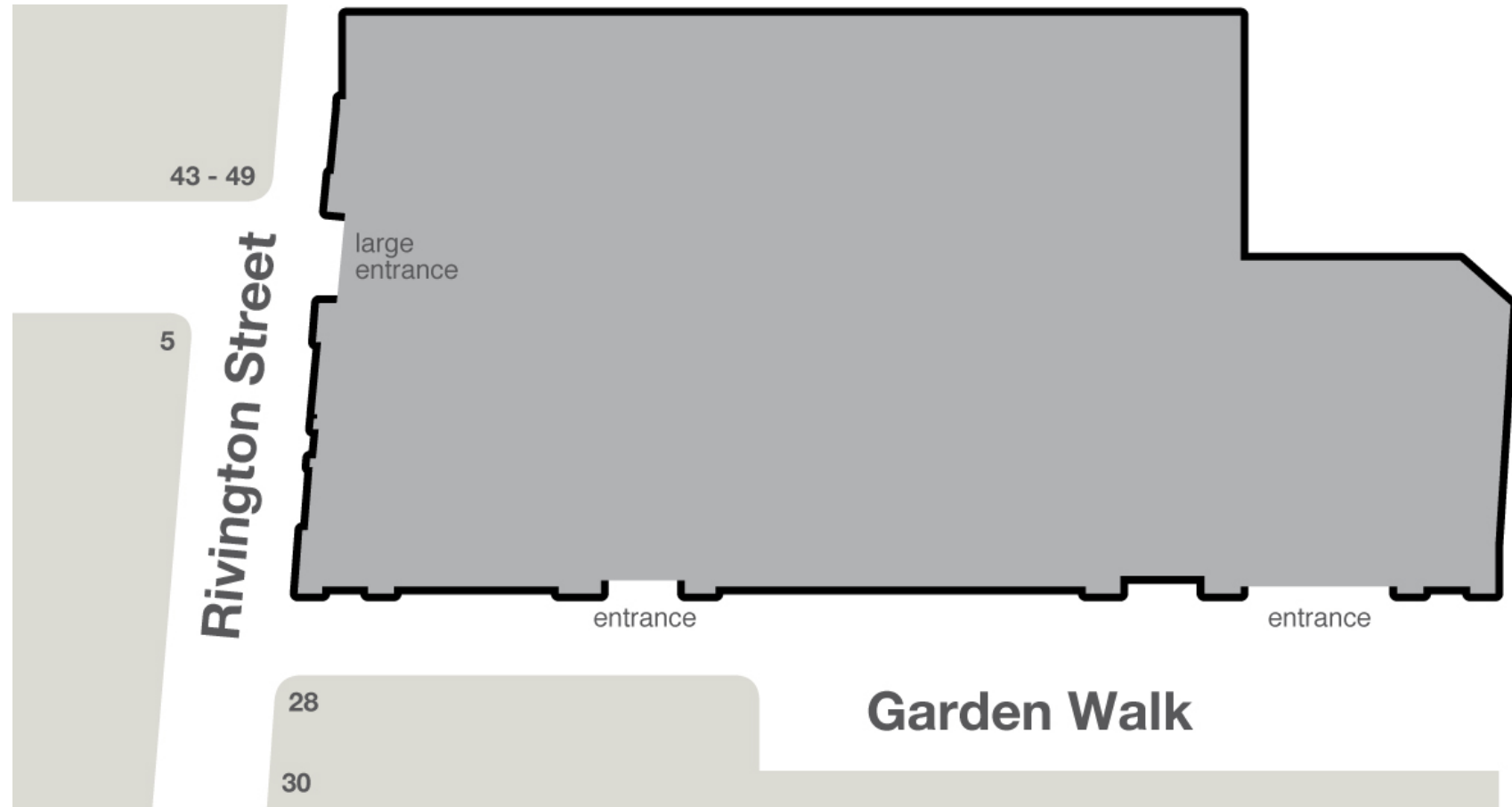
the tramshed basement hall floorplan



the tramshed main hall floorplan



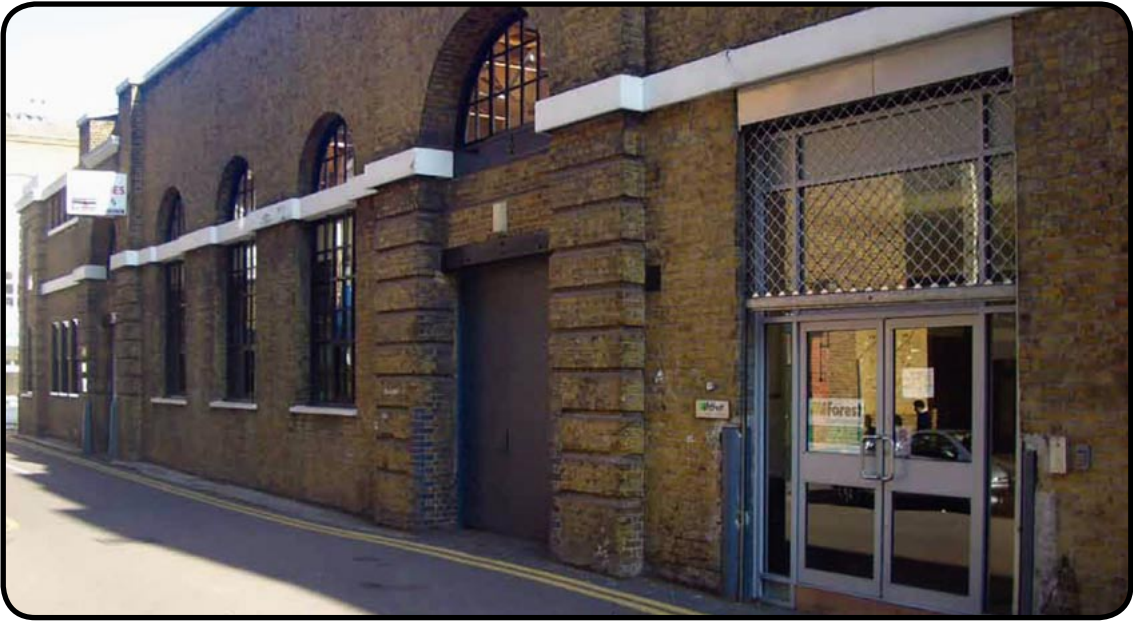
the tramshed first floor floorplan



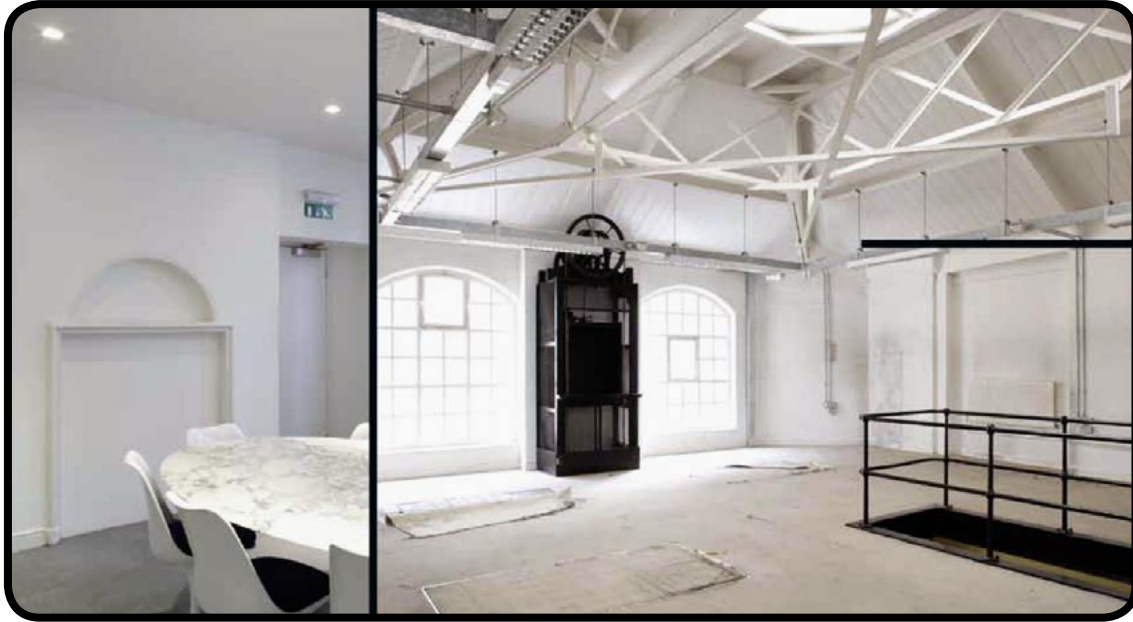
the tramshed entrance/access floorplan



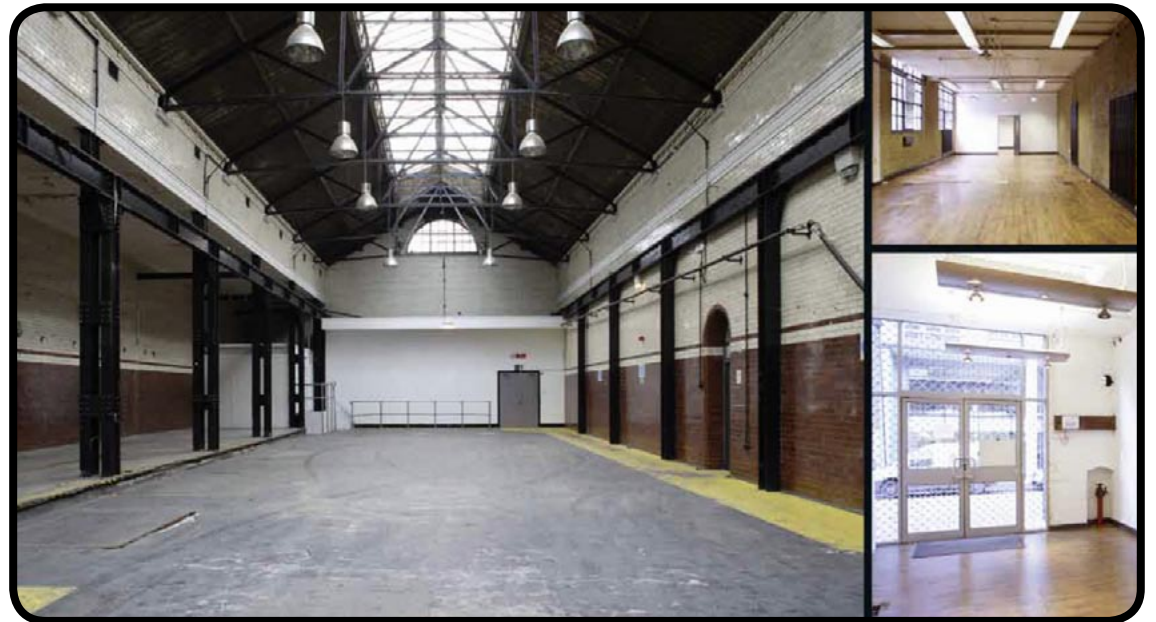
the tramshed basement hall



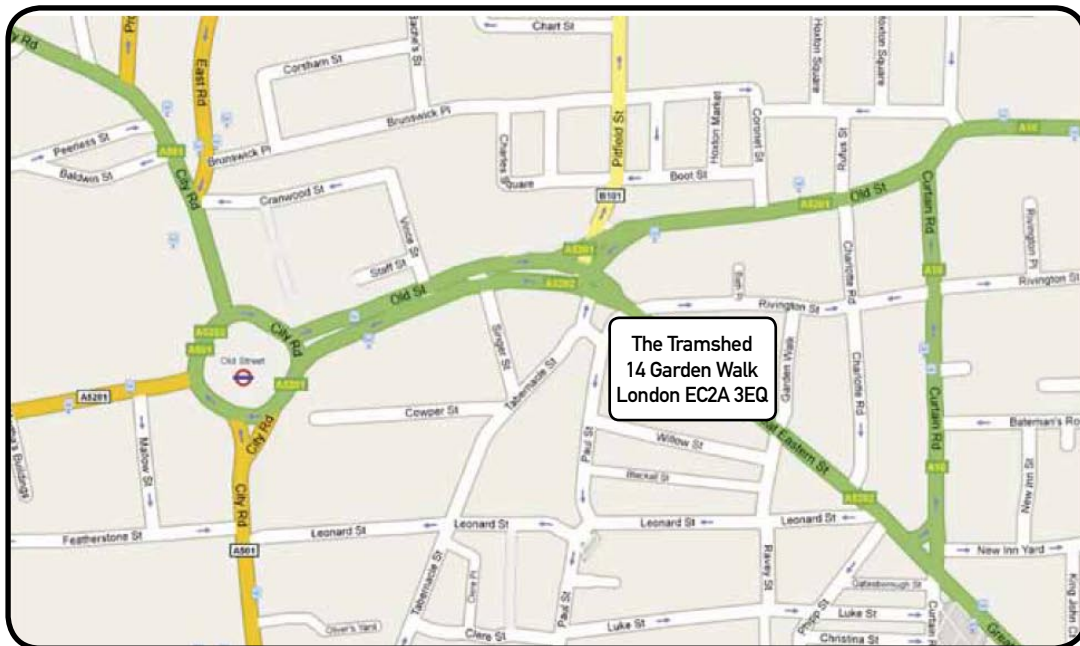
the tramshed main entrance



the tramshed first floor space



the tramshed main hall



how to get there

by underground:
Old Street is the nearest tube station (Northern line),
3-min walk away

by rail:
10-min walk from Liverpool street station

by road:
See map. Street parking restrictions/pay & display hours
(Jan 2010):
mon-fri 8.30am - 6.30pm sat 8.30am - 1.30pm
NCP Finsbury Square
mon-sun 24 hours £1.50/15 mins £36.00/day

industri management exclusively manages some of London's most exciting events/filming & photographic locations.

We executive manage all location hires and do all the relevant paperwork such as invoicing, fee negotiations, health & safety assessments and insurance. With our extensive contacts we then proactively market and promote our properties to the media and event industries.

Elias Devries
Director of Events and Location Filming
07595 217 258
elias@industri.uk.com

Rachel Justice
Manager of Events & Location Filming
07739 219 481
rachel@industri.uk.com

Tarek Gjonnes
Director of Operations
07595 217 289
tarek@industri.uk.com

